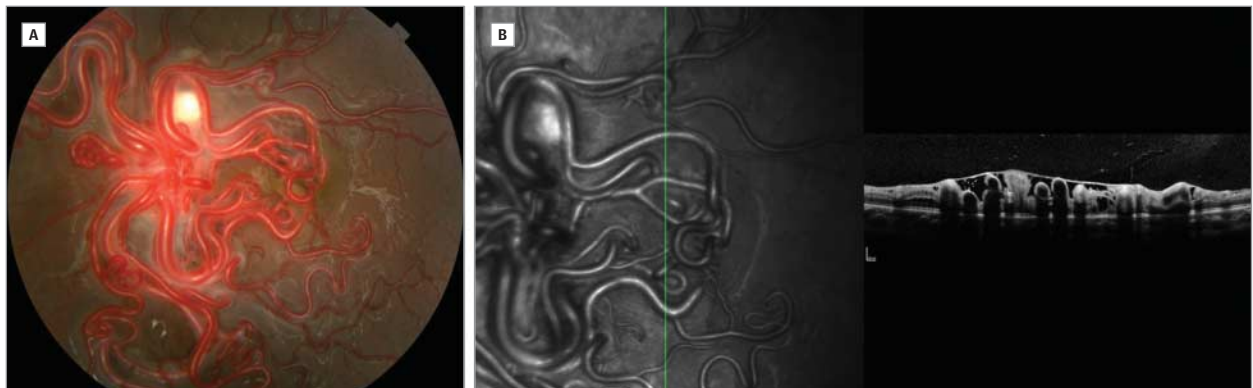


## Wyburn-Mason Syndrome

John B. Fileta, MD; Timothy J. Bennett, CRA, OCT-C; David A. Quillen, MD



A, An asymptomatic 12-year-old girl presented with unilateral dilated and tortuous retinal vessels. B, Optical coherence tomography demonstrates a dramatic pattern of circular lesions corresponding to cross-sections of abnormal retinal vessels. Findings are consistent with the diagnosis of Wyburn-Mason syndrome.